



[www.fleet.vdo.com](http://www.fleet.vdo.com)

# Equipped for everything – VDO solutions for fleets and workshops

Product Catalog 09-2024

**VDO**

# Table of Contents

<b>The DTCO® 4.1 – mandatory and useful at the same time</b>	<b>4</b>
Mobility Package Kit	6
<b>Digital Tachograph DTCO® 3.0a</b>	<b>8</b>
VDO Counter – The Smart Calculator for Driving and Rest Periods	11
<b>The smart app (VDO Fleet App)</b>	<b>13</b>
<b>Analog Tachographs 1324</b>	<b>14</b>
MTCO 1324 (ADR variant)	14
MTCO 1324 replacement	15
<b>E-Tacho 1323</b>	<b>16</b>
<b>Spare Parts for Tachographs</b>	<b>17</b>
Front and Counter Attachments	17
Other	18
<b>Speed Sensors</b>	<b>19</b>
1314 Pulse Generator	20
1318 Pulse Generator	20
1319 Pulse Generator with Cable	20
1318 Active Pulse Generator	21
1314 Pulse Generator Cable	21
1318 Pulse Generator Cable	21
2170 KITAS Cable	21
KITAS 2+ Pulse Generator	22
KITAS 2+ Pulse Generator (continuation)	23
Pulse Splitter/Adapter	23
KITAS 4.0 Sensor	24
KITAS 4.0 Pulse Generator (continuation)	25
<b>Printer Paper and Diagram Charts</b>	<b>27</b>
Printer Paper	27
Diagram Charts	27
<b>Accessories</b>	<b>28</b>
Driver Folder	28
Blind Chart	28
Test Template	28
<b>Solutions for Fleets and Drivers</b>	<b>29</b>
<b>DLK Smart Download Key</b>	<b>30</b>
<b>DLKPro S – Product Family</b>	<b>31</b>
DLKPro Download Key S	31
<b>DLKPro Compact S</b>	<b>32</b>
Accessories	32
VDO CardReader	33
VDO SmartTerminal	33
Diagram Chart Scanner	33

<b>Automatic, on Time, Anywhere –</b>	
<b>VDO Fleet Remote Download</b>	<b>34</b>
VDO Remote DL 4G	35
<b>VDO Fleet – The Web-Based Cloud Solution</b>	<b>36</b>
VDO Fleet Tachograph Management	37
VDO Fleet Tachograph Live Services	37
VDO Fleet Connect and Extract	37
<b>VDO Hosting Service</b>	<b>39</b>
<b>Solutions for Workshops</b>	<b>40</b>
VDO Label Printer	40
DTCO® Testing Set	40
Everything You Need for a DTCO® Test	41
Cleaning Card Set for DTCO®	41
Cleaning Cloths for Driver Cards	41
Back-up Battery	41
Repair	41
<b>Sealing</b>	<b>42</b>
Sealing Tools	42
Sealing Caps	42
Sealing Material	43
<b>The WorkshopTab</b>	<b>44</b>
<b>Even safer – KITAS 4.0 Documentation</b>	<b>45</b>
<b>Prepare Your Workshop for the</b>	
<b>Smart Tachograph</b>	<b>46</b>
WorkshopTab	47
Spare Parts for the WorkshopTab	47
Accessories for the WorkshopTab	48
Accessories for the WorkshopTab with DTCO® 4.1	50
<b>Training Accessories</b>	<b>51</b>
Training Sessions	51
Demo Cases and Cards	51
Operating Manual	51
Technical Product Handbook/Documentation	51
Training Software	51



## The DTCO® 4.1 – mandatory and useful at the same time

The regulations of the EU Mobility Package 1 require new control devices, the so-called 2nd version of the smart tachograph. The DTCO® 4.1 fully complies with these legal requirements while retaining the familiar operating concept, so drivers hardly have to get used to anything new. For vehicles traveling internationally, this device eliminates the previous stop when crossing borders because the DTCO® 4.1 automatically registers the border crossing. The device is suitable for recording border crossings, loading and unloading processes and for calculating working hours and the new, shortened rest period.

### Your advantages at a glance

- Fully complies with the amendments to EU Regulation 2016/799 as per Implementing Regulation (EU) 2021/1228
- Quickly and easily configurable via DTCO® Configuration App
- Standardized ITS interface for fleet management systems
- Supports control and data download via Bluetooth®
- Automatic detection of border crossings
- Supports extended driving and rest time rules for international journeys
- Configurable warnings according to Working Time Directive 2002/15 EC
- Extended input time for manual supplements
- Future-proof with the legally required update function

The DTCO® 4.1 only requires a passive DSRC antenna to operate. This simple installation and integration process saves you time, effort and money.

An overview of all certified installation partners for the EU Mobility Package I can be found at [www.vdo-partner.com](http://www.vdo-partner.com)

 <https://www.youtube.com/watch?v=rndKiSkQK50>

Content

DTCO® 4.1 AAA Order number	DTCO® 4.1 Internal product number	Description Vehicle/type	DTCO® 4.1 Universal	DTCO® Mobility Package kit
VDO UNIVERSAL				
AAA2359680021	1381-7550333013	UNIVERSAL ADR Z2 CAN R=120Ω	AAA2359680021 (1381-7550333013)	2910003214600
AAA2359690021	1381-7550333014	UNIVERSAL ADR Z2 without CANR	AAA2359690021 (1381-7550333014)	2910003214700
AAA2359710021	1381-4550332018	UNIVERSAL ADR Z1 CAN R=120Ω	AAA2359710021 (1381-4550332018)	2910003214800
AAA2359700021	1381-4550332019	UNIVERSAL ADR Z1 without CANR	AAA2359700021 (1381-4550332019)	–
VDO TRAINING				
AAA2359670021	1381-7550033006	Training Testkey	–	–
Dennis Eagle				
AAA2388570021	1381-1500133016	Trucks UK without CAN-R	AAA2359690021 (1381-7550333014)	2910003214700
Fendt (AGCO)				
AAA2371780021	1381-0550033001	900-1000 Vario	AAA2359690021 (1381-7550333014)	2910003214700
Isuzu MIDI				
AAA2371790021	1381-1550033002	Midbus	AAA2359690021 (1381-7550333014)	2910003214700
VDL Goup				
AAA2362600021	1381-1520133015	Bus & Coach with CAN-R	AAA2359680021 (1381-7550333013)	2910003214600
AAA2362610021	1381-1530133003	Bus & Coach without CAN-R	AAA2359690021 (1381-7550333014)	2910003214700



Mobility Package Kit

Order number	Description
2910003214600	DTCO® 4.1 Mobility Package Kit – Version 1 ADR Z2, with CAN-R Incl. DSRC antenna, DSRC HF cable 3 m, cover for DSRC antenna
2910003214700	DTCO® 4.1 Mobility Package Kit – Version 2 ADR Z2, without CAN-R Incl. DSRC antenna, DSRC HF cable 3 m, cover for DSRC antenna
2910003214800	DTCO® 4.1 Mobility Package Kit – Version 3 ADR Z1, with CAN-R Incl. DSRC antenna, DSRC HF cable 3 m, cover for DSRC antenna





# Digital Tachograph

## DTCO® 3.0a

DTCO® from VDO is usually the solution for recording legally prescribed driving and rest times.



A new front design in various colors and single-button operation for changing activities give the DTCO® a higher quality appearance. With a negative display and new remote control options via smartphone, the DTCO® offers even better operating capabilities. For instance, drivers or business owners can use the Configuration App to change settings directly themselves.

### Advantages of the DTCO® 3.0

- Equipped with 2 chip card readers, printer, display, real-time clock, operating elements and memory
- Provides a reliable and convenient basis for fulfilling legal regulations with multiple interfaces and functions
- Records the driving of drivers and co-drivers, working and rest periods in real time, as well as current speed and distance and job-specific parameters such as engine speed
- Gain valuable driving time in distribution transport, traffic and during customs clearance, all while maneuvering with the "1 minute rule"
- Direct data download with DLKPro Download Key as well as Remote DL 4G using wireless
- Roughly one third faster remote and local data download
- Better data protection through card licensing with differing access rights
- Record of up to 8 CAN messages regarding the vehicle's physical properties



## Digital Tachograph DTCO® 3.0a

DTCO® 3.0a Order number	DTCO® 3.0a Internal product number	Volt	CAN-R	IMS	Description Vehicle/type	DTCO® 3.0 Universal
VDO UNIVERSAL						
A3C0539560020	1381-7550303005	24 V/ 12 V	With CAN-R	Standard	DTCO® 24V-ADR VKF R3.0A EC/GGVS series	A2C1648490020 (1381-7550303001)
A3C0539590020	1381-7550303006	24 V/ 12 V	Without CAN-R	Standard	DTCO® 24V-ADR VKF R3.0A EC/GGVS series	A2C1648500020 (1381-7550303002)
A3C0604540020	1381-7550303007	24 V/ 12 V	With CAN-R	Classic	DTCO® 24V-ADR VKF R3.0A EC/GGVS series	A3C0560480020 (1381-7550303003)
A3C0604550020	1381-7550303008	24 V/ 12 V	Without CAN-R	Classic	DTCO® 24V-ADR VKF R3.0A EC/GGVS series	A3C0560490020 (1381-7550303004)
A3C0539540020	1381-4550302003	24 V	With CAN-R	Standard	DTCO® 24V-ADR VKF R3.0A EC/GGVS series	A2C1648470020 (1381-4550302001)
A3C0539550020	1381-4550302004	24 V	Without CAN-R	Standard	DTCO® 24V-ADR VKF R3.0A EC/GGVS series	A2C1648480020 (1381-4550302002)
VDO TRAINING						
A3C0539600020	1381-7550003001	24 V/ 12 V	With CAN-R	Standard	DTCO® 24V-ADR VKF R3.0A EC/GGVS series	A2C1807590020 (1381-4550002004)
DAF						
A3C0538750020	1381-2511303003	24 V	With CAN-R	Standard	DTCO® 24V-ADR DAF R3.0A EC/GGVS series	A2C1704920020 (1381-2511303002)
EVOBUS						
A3C0530520020	1381-1500103004	24 V	Without CAN-R	Standard	DTCO® 24V EVO R3.0A EC series, BUS 500kBd	A2C1680680020 (1381-1500103002)
A3C0530590020	1381-1520103004	24 V	With CAN-R	Standard	DTCO® 24V EVO R3.0A EC series	A2C1680620020 (1381-1520103002)
A3C0530580020	1381-1520104002	24 V	With CAN-R	Standard	DTCO® 24V EVO R3.0A EC series	A2C1680670020 (1381-1520104001)
IVECO						
A3C0537850020	1381-0522004003	12 V	–	Standard	DTCO® 12 V IVE R3.0A EC series, Iveco Daily S2000	A2C1751210020 (1381-0522004002)
A3C0537900020	1381-0532103010	12 V	Without CAN-R	Standard	DTCO® 12 V IVE R3.0A EC series, Iveco Daily MY 2007	A2C1750600020 (1381-0532103006)
A3C0537890020	1381-0532103009	12 V	Without CAN-R	Standard	DTCO® 12 V IVE R3.0A EC series, Iveco Daily MY 2012	A2C1750540020 (1381-0532103005)
A3C0537840020	1381-0532103011	12 V	Without CAN-R	Standard	DTCO® 12 V IVE R3.0A EC series, Iveco Daily MY 2014/ 2016/2019	A3C0232470020 (1381-0532103007)
A3C0537920020	1381-1522103003	24 V	With CAN-R	Standard	DTCO® 24V IVE R3.0A EC series, Irisbus	A2C1750910020 (1381-1522103002)
A3C0537930020	1381-1552103006	24 V	With CAN-R	Standard	DTCO® 24V IVE R3.0A EC series, Iveco Stralis 250kBd	A2C1750900020 (1381-1552103004)
A3C0537910020	1381-1552103005	24 V	With CAN-R	Standard	DTCO® 24V IVE R3.0A EC series, Iveco Stralis 500kBd	A2C1750890020 (1381-1552103003)
MAN						
A3C0538600020	1381-2621003002	24 V	With CAN-R	Standard	DTCO® 24V-ADR MAN R3.0A EC/GGVS series, MAN TG 250kBd	A2C1577480020 (1381-2511003002)
MERCEDES-BENZ						
A3C0530290020	1381-0552003003	12 V	Without CAN-R	Standard	DTCO® 12 V DAG R3.0A EC series, Sprinter	A2C1989840020 (1381-0552003002)
A3C0539420020	1381-2520003002	24 V	With CAN-R	Standard	DTCO® 24V-ADR VKF R3.0A EC/GGVS series, Actros 3 etc.	A3C0053520020 (1381-2520003001)
A3C0530300020	1381-2502003003	24 V	Without CAN-R	Standard	DTCO® 24V-ADR DAG R3.0A EC/GGVS series, Actros 4 etc. (SFTP)	A2C1577470020 (1381-2502003001)

DTCO® 3.0a Order number	DTCO® 3.0a Internal product number	Volt	CAN-R	IMS	Description Vehicle/type	DTCO® 3.0 Universal
RENAULT						
A3C0539310020	1381-2552303004	24 V	Without CAN-R	Standard	DTCO® 24V-ADR RTR R3.0A EC/GGVs series, Renault Trucks TEA2	A2C1753900020 (1381-2512303003)
A3C0539340020	1381-1552303006	24 V	With CAN-R	Standard	DTCO® 24V RTR R3.0A EC series, Renault Trucks T, K (TEA2+)	A2C1753650020 (1381-1552303002)
A3C0539350020	1381-4552301003	24 V	With CAN-R	Standard	DTCO® 24V-ADR RTR R3.0A EC/GGVs series, Renault Trucks T, K (TEA2+)	A2C1753620020 (1381-4552301002)
SCANIA						
A3C0538980020	1381-4521302002	24 V	With CAN-R	Standard	DTCO® 24V-ADR SCA R3.0A EC/GGVs series, Scania R, G, P series	A3C0106160020 (1381-4521302001)
A3C0538990020	1381-4551302002	24 V	Without CAN-R	Standard	DTCO® 24V-ADR SCA R3.0A EC/GGVs series, Scania S, R, G, P, L series (MY 2017)	A3C0106180020 (1381-4551302001)
VOLVO						
A3C0539810020	1381-2562003002	24 V	With CAN-R	Standard	DTCO® 24V-ADR VON R3.0A EC/GGVs series, Volvo FH/FM (TEA2)	A3C0001260020 (1381-2562003001)
A3C0539730020	1381-1562303005	24 V	With CAN-R	Standard	DTCO® 24V VON R3.0A EC series, Volvo FH/FM 2013 (TEA2+)	A2C1753690020 (1381-1562303002)
A3C0539720020	1381-4562301005	24 V	With CAN-R	Standard	DTCO® 24V-ADR VON R3.0A EC/GGVs series, Volvo FH/ FM 2013 (TEA2+)	A2C1753660020 (1381-4562301002)
VW						
A3C0539900020	1381-0621003002	12 V	2x 1.3 kOhm	Standard	DTCO® 12 V VWN R3.0A EC series, VW T6, Amarok	A3C0023720020 (1381-0621003001)





## VDO Counter – The Smart Calculator for Driving and Rest Periods

The DTCO® offers a smart calculator that determines the driver's remaining driving and rest periods in real time and shows them directly on the display of the DTCO®.

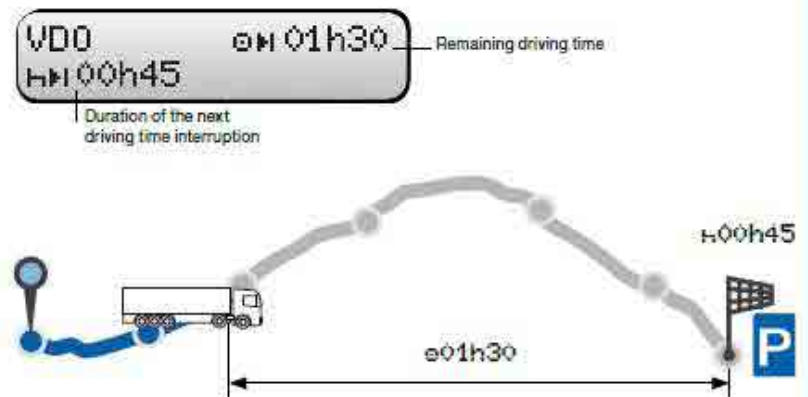
The VDO Counter not only reliably calculates driving and rest periods per shift, but also for the week and two week period. It also informs drivers of upcoming changes in their activities and their duration while they are driving. Update card for VDO Counter.

Order number	Description
A2C5951660366	Update card for 1 x DTCO® Counter update



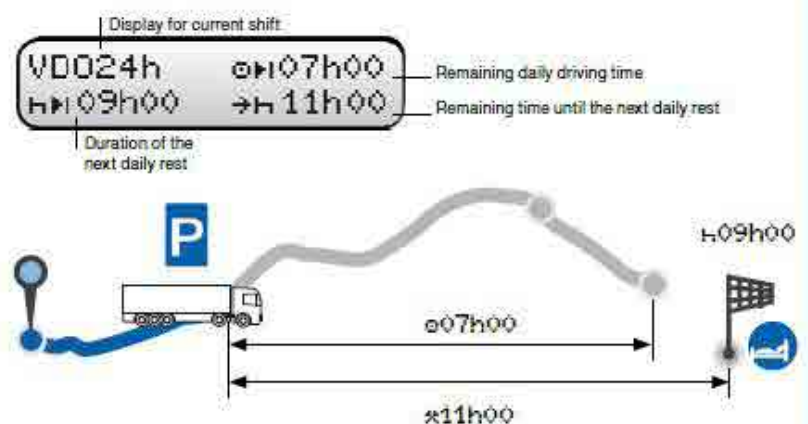
### Display of current driving and rest times

Whether at motorway service areas, in the yard or while driving – your drivers will always know their remaining driving times and when to stop for a break.



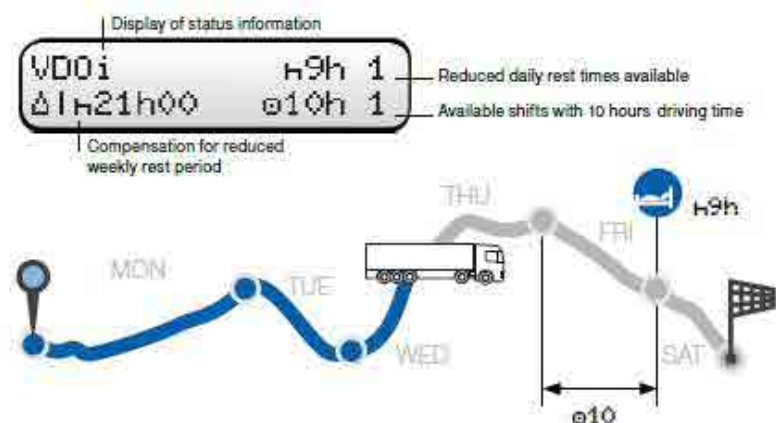
### Display for current shift and week

Your drivers can easily retrieve their driving and rest times for the current shift or week.








### Display of status information


Status information provides your drivers with a quick overview of available reduced daily rest times, extended driving times and upcoming compensation times.



# The smart app

With the **VDO Fleet App**, you can manage your fleet efficiently and on the move. Connected via Bluetooth® to the DLK Smart Download Key, tachograph and driver card data can be securely downloaded and archived in VDO Fleet. Real-time information via VDO Fleet Maps and driver availability always provides an up-to-date overview, enabling a rapid response to delays or incidents. With reminder functions, such as the next download due date, you have everything safely under control.

Android		  <a href="https://play.google.com/store/search?q=VDO%20Fleet%20App&amp;c=apps&amp;gl=DE">https://play.google.com/store/search?q=VDO%20Fleet%20App&amp;c=apps&amp;gl=DE</a>
iOS		 <a href="https://apps.apple.com/de/app/vdo-fleet/id6467607820">https://apps.apple.com/de/app/vdo-fleet/id6467607820</a>



VDO Fleet App



# Analog Tachographs 1324



MTCO 1324

## MTCO 1324 (ADR variant)

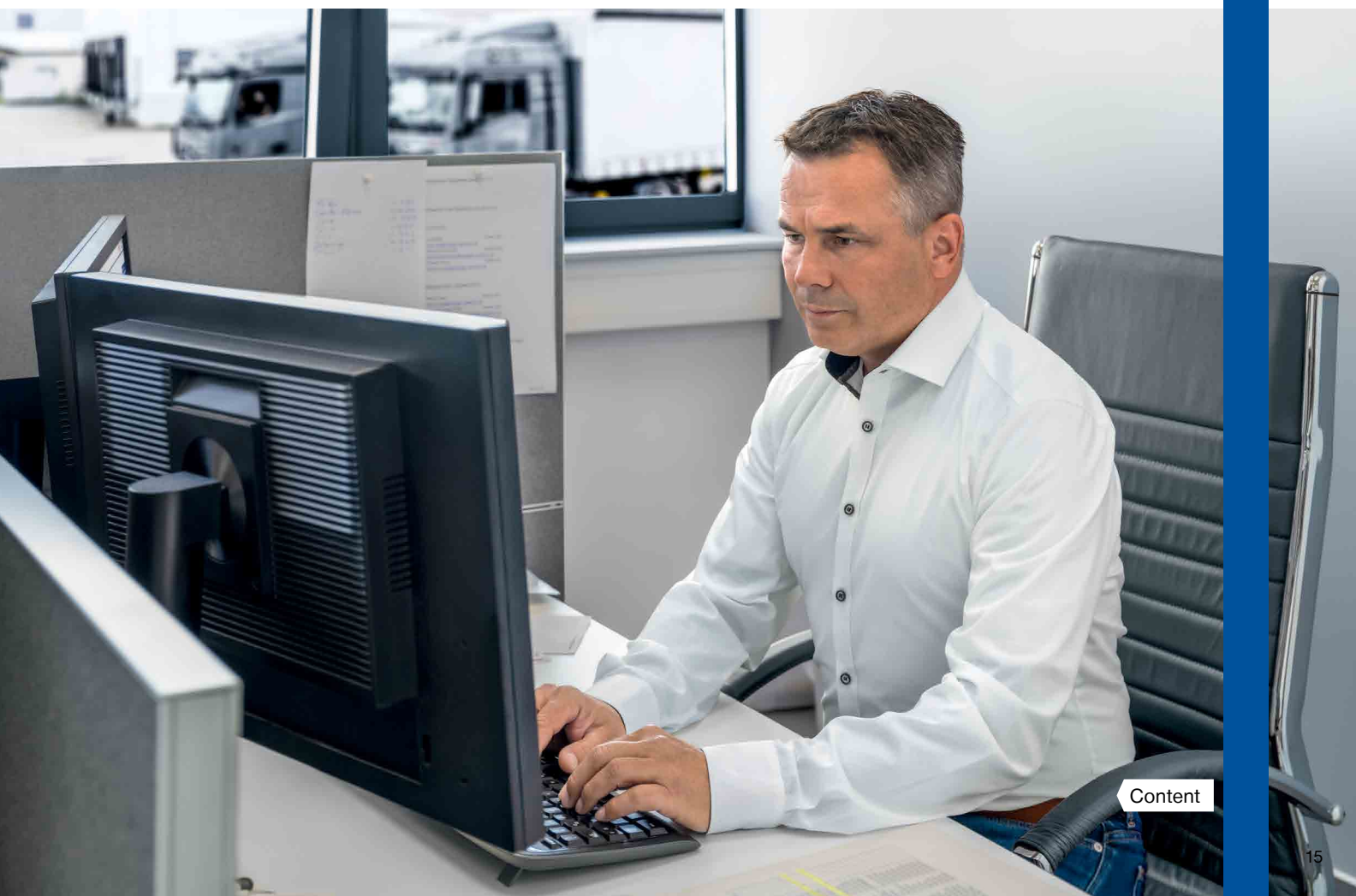
DIN format analog tachograph

Order number	Description	Voltage	Display	Vehicle/type
<b>DAF</b>				
1324514015920104B	CAN, drawer/flap, 125 km/h	24 V	Amber	CF
<b>Iveco</b>				
1324710015400100B	CAN/ADR, drawer/flap, 125 km/h	24 V	Green	Stralis
<b>Mercedes-Benz</b>				
1324710015420300B	125 km/h	24 V		Actros
1324710015140300B	125 km/h	24 V		Actros
<b>Neoplan</b>				
1324510012030100B	CAN/ADR, drawer/flap, 125 km/h	24 V	Green	EvoBus
<b>Scania</b>				
1324710815730100B	CAN/ADR, drawer/flap, 125 km/h	24 V	Green	4 series
1324510015520300B	CAN, drawer/flap, 125 km/h	24 V	Green	R series
<b>Setra/Evobus</b>				
1324512015720102B	K-Line, drawer/flap, 125 km/h	24 V	Green	
<b>Volvo</b>				
1324523015170303B	CAN/A2, lighting drawer/flap, 125 km/h	24 V	Yellow	FL6



## MTCO 1324 replacement

Order number	Description/Voltage	Display	Vehicle/type
<b>DAF</b>			
1324/714015940104T	24 V-ADR v125 CAN120	Orange/A2	
<b>EvoBus</b>			
1324/512015720102T	24 V v125 CAN120	Green/A2	
<b>Iveco</b>			
1324/601052660001T	12 V v180 K-L	Green	Daily S2000
<b>MAN</b>			
1324/710215680100T	24 V-ADR v125 CAN120	Orange/C	
<b>Mercedes-Benz</b>			
1324/610052050100T	12 V v180 CAN120		Sprinter T1N99
1324/640052640500T	12 V v180 IESCAN		Sprinter T1N03
1324/710015140300T	24 V-ADR v125 CAN120	Yellow/C	Actros
1324/710015420300T	24 V-ADR v125 CAN120	Green/C	Actros
<b>Renault</b>			
1324/714015260104T	24 V-ADR v125 CAN120	Orange/C	
<b>Scania</b>			
1324/510015520300T	24 V v125 CAN120	Green/C	
<b>Volvo</b>			
1324/713015470303T	24 V-ADR v125 CAN120	Yellow/C	FH



# E-Tacho 1323

The 1323 electronic tachometer offers a modular structure and the option of a customer-specific front design for harmonious integration into the cockpit generations of today and tomorrow. The E-Tacho 1323 provides the legally required speed display either on a stand-alone basis or in conjunction with MTCO radio-format tachographs such as the DTCO®. In stand-alone use, the E-Tacho 1323 directly evaluates pulse generator signals; the K-Line or CAN interface are used in conjunction with the tachographs.



E-Tacho 1323 speedometer

Order number	Description	Voltage	Lighting
1323-030103000523	125 km/h or 80 m.p.h. CAN, round front	24 V	White/LCD green
1323-030103000623	125 km/h or 80 m.p.h. CAN, round front	24 V	White/LCD green
1323-030104000523	125 km/h or 80 m.p.h. CAN, round front	24 V	White/LCD green
1323-030104000623	125 km/h or 80 m.p.h. CAN, round front	24 V	
1323-030103117323	125 km/h or 80 m.p.h. CAN120 for MAN F2000, black, rectangular front	24 V	
1318-420020117623	125 km/h or 80 m.p.h. rectangular front	24 V	None
1323-030103016423	125 km/h or 80 m.p.h. CAN120, round front	24 V	White/LCD amber
1323-030103010423	125 km/h or 80 m.p.h. CAN120, FTCO1319 design like MB Actros	24V	Green/LCD green
1323-030103000653	180 km/h or 110 m.p.h. CAN 120, round front	12 V	White/LCD green
1318-420000114423	125 km/h or 80 m.p.h. dark gray, rectangular front for Iveco	24 V	

# Spare Parts for Tachographs

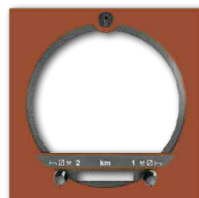
## Front and Counter Attachments



1318 front for 2 drivers



1318 front for 1 driver



1318 front for MAN

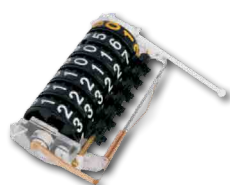
1318 front for  
Mercedes-BenzRound standard  
front for 1318

Counter attachment

Order number	Description
1318-0101-011-011	Front ring for 1318 tachographs for 2 drivers
1318-0201-015-001	Counter attachment
1318-0101-011-021	Front ring for 1318 tachographs for 2 drivers, RPM
1318-0201-015-110	Counter attachment
1318-0101-011-780	1318 front for Mercedes-Benz, rectangular, black, 2 drivers
1318-0201-015-170	Counter attachment
1318-0101-011-830	1318 front for Renault Premium, black, rectangular, 2 drivers
1318-0201-015-180	Counter attachment
1318-0101-011-280	1318 front for Scania, black, rectangular, 2 drivers
1318-0201-015-040	Counter attachment
1318-0101-011-092	1318 front for Volvo, black, rectangular, 2 drivers
1318-0201-015-012	Counter attachment
1318-0101-011-890	Front ring complete for MB, 2 drivers, T2W

## Other

Order number	Description
<b>Odometer</b>	
1318-0207-000-010	Odometer 1318
<b>Lock</b>	
1318-9999-027-000	1318 lock, kit
<b>Wiring harness</b>	
1318-90100000	1318/1319/1324/1381 wiring harness (power supply)
<b>Connection</b>	
HW41-008	4-pin connection (1311/1314)
HS53-6600-081	1318/1319/1324/1381, mini-timer connection, white
HS53-6600-082	1318/1319/1324/1381, mini-timer connection, yellow
HS53-6600-083	1318/1319/1324/1381, mini-timer connection, red
HS53-6600-084	1318/1319/1324/1381, mini-timer connection, brown
<b>Terminal</b>	
HW32-260	Mini-timer terminal
<b>Built-in console</b>	
X39-140-000-011	DTCO®/MTCO Universal built-in console 1 DIN (complete)
<b>Installation frame</b>	
1324-90010500	DTCO®/MTCO installation frame
<b>End cap</b>	
A2C5951205566	DTCO® 1.4 to 2.1 front interface end cap, rubber (2 units)
<b>Repair set</b>	
A2C5951185866	DTCO® repair set for operating panel (printer feed)



Odometer 1318



DTCO® front interface end caps



Mini-timer terminal



DTCO® repair set for operating panel



1318 lock, kit



4-pin connection



DTCO®/MTCO installation frame



DTCO®/MTCO Universal built-in console 1 DIN (complete)



Wiring harness



Mini-timer connection





# Speed Sensors



1314 pulse generator  
female thread M22X1.5



1314 Pulse generator  
female thread 7/8-18 UNS



1318 pulse generator  
female thread M22X1.5



1318 pulse generator  
male thread M22X1.5

## 1314 Pulse Generator

Order number	Description
2155-01000002	Female thread M22X1.5
2155-03000002	Female thread 7/8-18 UNS



1318 Pulse generator  
with 4 round connectors

## 1318 Pulse Generator

Order number	Description
<b>Female thread</b>	
2159-01000003	Female thread M22X1.5
<b>Male thread</b>	
2159-02000003	Male thread M22X1.5
<b>Pulse generator</b>	
2159-20002101	L = 19.8 mm with 1.2 mm washer
2159-20002301	L = 25 mm with 1.2 mm washer
2159-20002201	L = 90 mm with 1.2 mm washer
2159-20102101	L = 19.8 mm with 1.2 mm washer, 4x round connector
2159-20100301	L = 25 mm without washer, 4x round connector
2159-20102201	L = 90 mm with 1.2 mm washer, 4x round connector
2159-20102301	L = 25 mm with 1.2 mm washer, 4x round connector
2159-20102401	L = 63.2 mm with 1.2 mm washer, 4x round connector
2159-20102501	L = 35 mm with 1.2 mm washer, 4x round connector
2159-20102601	L = 136 mm with 1.2 mm washer, 4x round connector
2159-20102801	L = 136 mm with 1.2 mm washer, 4x round connector
2159-20104101	L = 19.8 mm with 1.2 mm washer, 4x round connector



1318 Pulse generator  
with 1.2 mm washer



1319 Pulse generator with cable

## 1319 Pulse Generator with Cable

Order number	Description
2159-3022022401	L = 2,240 mm, cable bracket 30°, 2:1 splitter with yellow connector
2159-3031041001	L = 4,100 mm, cable bracket 30°, 1:1 splitter with bayonet connector



## 1318 Active Pulse Generator

Order number	Description
2159-50003102	L = 19.8 mm with 1.8 mm washer
2159-50004102	L = 19.8 mm with 1.2 mm washer
2159-50004202	L = 90 mm with 1.2 mm washer
2159-50004302	L = 25 mm with 1.2 mm washer
2159-50004402	L = 63.2 mm with 1.2 mm washer
2159-50004502	L = 35 mm with 1.2 mm washer
2159-50004602	L = 25 mm without washer
2159-50004702	L = 63.2 mm without 1.2 mm washer
2159-50004802	L = 115 mm with 1.2 mm washer
2159-50014202	L = 90 mm with 1.2 mm washer, Volvo connection



1318 Active pulse generator

## 1314 Pulse Generator Cable

Order number	Description
2155-50010750	1314 Generator cable, 7.5 m
2155-50011000	1314 Generator cable, 10 m
2155-50011500	1314 Generator cable, 15 m



1314 Pulse generator cable

## 1318 Pulse Generator Cable

Order number	Description
2159-80010500	1318 Generator cable, 5 m
2159-80010750	1318 Generator cable, 7.5 m
2159-80011500	1318 Generator cable, 15 m



1318 Pulse generator cable

## 2170 KITAS Cable

Order number	Name	Length
2170-80010850	KITAS cable	8.5 m
2170-80011500	KITAS cable	15.0 m
2170-80210420	KITAS cable	4.2 m
2170-80220280	KITAS cable, 90°	2.8 m
2170-80650400	KITAS cable	4.0 m
2170-80012000	KITAS cable	20.0 m
2170-80012200	KITAS cable	22.0 m



KITAS cable

## KITAS 2+ Pulse Generator

Order number	Internal product number	Description	Vehicle/type
A3C0641640120	2171.20006135	speed sensor 2171.20+ 19,8mm w8 UK	Iveco Daily, Renault Trucks, Irisbus, Renault
A3C0641620120	2171.20002135	speed sensor 2171.20+ 19,8mm UK	DAF, Iveco, MAN, Renault Trucks, EvoBus, Van Hool, Bova, Neoplan, Irisbus, Voord, Scania
A3C0641600120	2171.20000335	speed sensor 2171.20+ 19,8mm w0 UK	Iveco Eurocargo
A3C0641720120	2171.20002335	speed sensor 2171.20+ 25mm UK	DAF, Iveco, MAN, Nissan, Renault Trucks, Scania, Volvo, Irisbus
A3C0641700120	2171.20000135	speed sensor 2171.20+ 25mm w0 UK	Mercedes-Benz, Iveco, Van Hool
A3C0641840120	2171.20002535	speed sensor 2171.20+ 35mm UK	Mercedes-Benz, Iveco, MAN, Scania, Van Hool, Volvo, DAF
A3C0641820120	2171.20000435	speed sensor 2171.20+ 35mm w0 UK	Scania
A3C0641920120	2171.20002435	speed sensor 2171.20+ 63,2mm UK	Mercedes-Benz, Iveco
A3C0641900120	2171.20000235	speed sensor 2171.20+ 63,2mm w0 UK	Iveco, Fiat, Mercedes-Benz
A3C0642020120	2171.20002235	speed sensor 2171.20+ 90mm UK	DAF, Mercedes-Benz, Iveco, Renault Trucks, Volvo, EvoBus, Van Hool, Bova, Neoplan, Irisbus, MAN, Scania
A3C0642170120	2171.20002635	speed sensor 2171.20+ 136,8mm UK	Neoplan, Iveco, Irisbus, MAN, Scania, Van Hool
A3C0642100120	2171.20002835	speed sensor 2171.20+ 115mm UK	Iveco, Volvo, MAN
A3C0641740120	2171.20100335	speed sensor VOL 2171.2010+ 23,8mm UK OR	Volvo, Renault Trucks
A3C0641660120	2171.20406135	speed sensor 2171.2040+ 19,8mm w8 UK 4:1	Iveco, VW etc.
A3C0641960120	2171.20302435	speed sensor FOG 2171.2030+ 63,2mm UK 4:1	Ford
A3C0641860120	2171.20502535	speed sensor 2171.2050+ 35mm UK	For vehicles with eddy current brakes of Telma Company
A3C0642060120	2171.20502235	speed sensor 2171.2050+ 90mm UK	For vehicles with eddy current brakes of Telma Company
A3C0642120120	2171.20502835	speed sensor 2171.2050+ 115mm UK	For vehicles with eddy current brakes of Telma Company
A3C0641630110	2171.2000213515	speed sensor 2171T20+ 19,8mm UK	Testkey

## KITAS 2+ Pulse Generator (continuation)

Bestellnummer	Interne Artikelnummer	Beschreibung	Fahrzeug/Typ
A2C3770010220	2171.01000035	speed sensor CS 2171.01+ UK	MAN, Fiat, PSA, Nissan, Mitsubishi
A2C3770030220	2171.03000035	speed sensor CS 2171.03+ UK	DAF, Volvo, Iveco, Renault Trucks
A2C3770070220	2171.07010135	speed sensor CS VWN 2171.07+ UK	VW
A2C3770060220	2171.08010035	speed sensor CS REG 2171.08+ UK	Renault, GM Opel/Vauxhall, Nissan



KITAS 2+



KITAS 2+ cable



1318 Pulse splitter



MTCO 1324 Pulse splitter



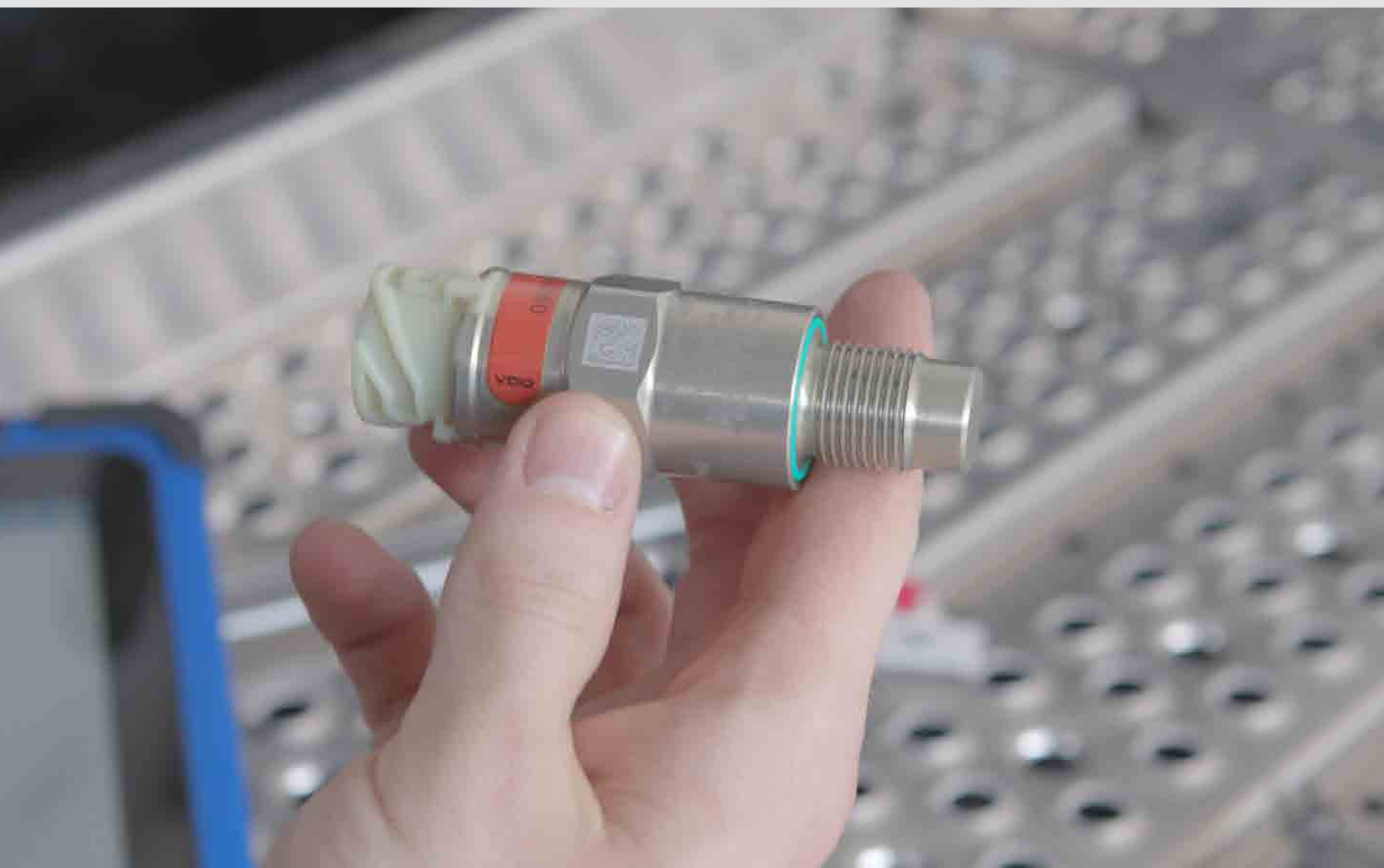
Pulse adapter



Limit transmitter

## Pulse Splitter/Adapter

Order number	Description
<b>Pulse splitter</b>	
X10-415-000-008	1318 Pulse splitter
X10-415-000-013	MTCO 1324 Pulse splitter
<b>Limit transmitter</b>	
2158-13002400	Limit transmitter 24 V 1S, 1310/1314
2158-22002400	Limit transmitter 24 V 1S, 1 km fixed
2158-23001200	Limit transmitter 12 V 1S, adjustable



## KITAS 4.0 Sensor

Order number	Internal product number	Description	Vehicle/type
<b>KITAS 4 R1.21</b>			
A3C1008670021	2185.2000010004	speed sensor 2185.20 18mm Rel.1.2	Iveco etc.
A3C1008690021	2185.2000020004	speed sensor 2185.20 18,6mm Rel.1.2	DAF, MAN, Iveco, Van Hool, VDL, ZF etc.
A3C1008700021	2185.2000030004	speed sensor 2185.20 19,8mm Rel.1.2	Isuzu MIDI, Iveco etc.
A3C1008710021	2185.2000040004	speed sensor 2185.20 23,8mm Rel.1.2	Allison, DAF, Daimler, Dennis Eagle, Fiat/PSA, Irizar, Iveco, MAN, Renault Trucks, Tatra, ZF etc.
A3C1008720021	2185.2000050004	speed sensor 2185.20 25mm Rel.1.2	Daimler, Irizar etc.
A3C1008730021	2185.2000060004	speed sensor 2185.20 33,8mm Rel.1.2	Alexander Dennis, Iveco, Ebusco, EvoBus, MAN, Scania, Solaris, Tatra, Van Hool, Volvo etc.
A3C1008750021	2185.2000070004	speed sensor 2185.20 62mm Rel.1.2	BYD, Daimler, Scania, Fiat/PSA, VW etc.
A3C1008760021	2185.2000080004	speed sensor 2185.20 63,2mm Rel.1.2	SOR
A3C1008770021	2185.2000090004	speed sensor 2185.20 88,8mm Rel.1.2	Daimler, Dennis Eagle, Iveco, MAN, Solaris, Temsa, VDL, ZF etc.
A3C1008790021	2185.2000100004	speed sensor 2185.20 113,8mm Rel.1.2	Volvo
A3C1008680021	2185.2000011004	speed sensor 2185.20 18mm Rel.1.2 (4:1)	Iveco, VW etc.
A3C1008830021	2185.2020071004	speed sensor 2185.20 62mm Rel.1.2 (4:1)	Ford

## KITAS 4.0 Sensor (continuation)

Order number	Internal product number	Description	Vehicle/type
A3C1008740021	2185.2000060104	speed sensor 2185.20 33,8mm Rel.1.2 (Telma)	VW etc.
A3C1008780021	2185.2000090104	speed sensor 2185.20 88,8mm Rel.1.2 (Telma)	Iveco, Temsa etc.
A3C1008800021	2185.2000100104	speed sensor 2185.20 113,8mm Rel.1.2 (Telma)	EvoBus etc.
A3C1013850021	2185-3212044004	speed sensor CA CON 521_440 TRA (1:1) TCO plug: yellow Rel.1.21	Spare part (Daimler, VW)
A3C1013860021	2185-3214041004	speed sensor CA CON 524_410 TRA (4:1) TCO plug: yellow Rel.1.21	Spare part (Daimler, VW)
A3C1013930021	2185-3281022204	speed sensor CA MBN 581_222 (1:1) plug: 4-Pol violet Rel.1.21	Spare part (Daimler, VW)
A3C1013940021	2185-3284022204	speed sensor CA MBN 584_222 (4:1) plug: 4-Pol violet Rel.1.21	Spare part (Daimler, VW)
A3C1013870021	2185-3241009104	speed sensor CA MBN 541_091 VS20 1:1 plug: Hirschmann heat resistant tube Rel.1.21	Daimler (Mercedes-Benz Vito, V-Klasse MY2019)
A3C1013880021	2185-3244009104	speed sensor CA MBN 544_091 VS20 4:1 plug: Hirschmann heat resistant tube Rel.1.21	Daimler (Mercedes-Benz Vito, V-Klasse MY2019)
A3C1013920021	2185-3251012504	speed sensor CA MBN 551_125 VS30-A 1:1 plug: Hirschmann heat resistant tube Rel.1.21	Daimler (Mercedes-Benz Sprinter MY2019)
A3C1013910021	2185-3251012404	speed sensor CA MBN 551_124 VS30-S 1:1 plug: Hirschmann heat resistant tube Rel.1.21	Daimler (Mercedes-Benz Sprinter MY2019)
A3C1013950021	2185-3291013904	speed sensor CA VWN 591_139 LF 1:1 plug: VW/Tyco corrugated tube Rel.1.21	VW Crafter 2
<b>KITAS 4.0 Testkey</b>			
A3C1023880010	2185-200002009315	speed sensor 2185.20T 18,6mm Rel.1.2 (Testkey)	Testkey



KITAS 4.0 Testing device UV Set		
2910002146700	Testing device UV Set	Contains: 1x VDO carrying case 1x UV lamp 1x USB charger 1x Battery pack (accumulator) 1x KITAS plastic test sample 1x Test card with UV seal
2910002817900	Seal KITAS 4.0 RP	50 pieces
2910003019200	Seal KITAS 4.0 XL 4BP	50 pieces
2910002066500	Clamping element lead seal 4.0 (nut)	1 piece



Testing device UV Set for  
KITAS 4.0 Sensor



KITAS 4.0



Seal KITAS 4.0 XL 4BP



Clamping element lead seal  
4.0 (nut)



# Printer Paper and Diagram Charts



DTCO® printer paper



DTCO® printer paper in POS dispenser

## Printer Paper

Original printer paper by VDO was specially developed for use in vehicles and has a special coating that ensures excellent legibility and durability, even when exposed to wide temperature fluctuations.

Order number	Description
1381-90030300	DTCO® printer paper (box of 3 rolls)
1381-90030300X	DTCO® printer paper in POS dispenser (20 boxes per dispenser)



Diagram chart

## Diagram Charts

Original diagram charts from VDO are fully coordinated to work with the high-quality registration technology of analog tachographs, guaranteeing very low wear to registration pins, optimal precision and excellent analytic capabilities.

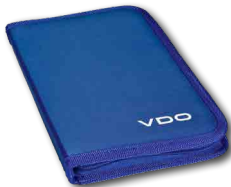
Order number	Description
1900-51150000	Diagram chart 180-24EC-4B (box of 100 units)
1900-53090000	Diagram chart 100-24/2EC-4B (box of 100 units)
1900-53120000	Diagram chart 125-24/2EC-4B (box of 100 units)
1900-53130000	Diagram chart 140-24/2EC-4B (box of 100 units)
1900-54120400	Diagram chart 125-3300-24/2EC-4B (box of 100 units)
1900-57090000	Diagram chart 100-24 EC4K (box of 100 units)
1900-57120000	Diagram chart 125-24 EC4K (box of 100 units)
1900-57120015	Diagram chart 125-24EC-4KA (box of 100 units)
1900-57130000	Diagram chart 140-24EC-4K (box of 100 units)
1900-58120400	Diagram chart 125-3300-24EC-4K (box of 100 units)

# Accessories

## Driver Folder

Storage folder with sections for diagram charts and printer paper.

Order number	Description
A2C5951219466	Driver folder for diagram charts and printer paper



Driver folder

## Blind Chart

For use if no diagram chart is to be used.

Order number	Description
1909-12000100	Blind chart



Test template

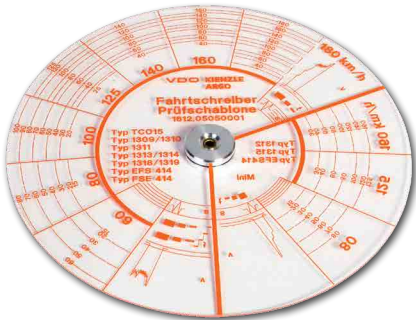
## Test Template

For reviewing testing diagrams to determine legal tolerance values.

Order number	Description
1999-7016-004-001	Test template (for 1999-7016-003-000)
1999-7016-003-000	Mat for test template



Mat for test template



Measurement range of the test template



# Solutions for Fleets and Drivers

In order to comply with the statutory archiving obligation, you must regularly read the data from the mass memory of the digital tachograph and from the driver card. Various innovative download solutions from VDO are available for reading, analyzing and archiving the data.

- Our **automatic download solutions** are particularly efficient and time-saving: not only do they download data completely independently, they also offer you the possibility of setting download intervals individually and thus adapting them optimally to the needs of your fleet.
- Whether a small or large fleet – **VDO download solutions** offer solutions to fit all business requirements. VDO provides important additional data for fleet management with mass memory and driver card data. There is a wide range of evaluation options to permanently increase the efficiency of your fleet with remote or manual downloading of data on or off site.

# DLK Smart Download Key

## Premium all-in-one solution for tachograph data management

A download tool you can trust – for easy and secure cloud archiving.

### Easy compliance

Streamline your operations with the 2.4-inch capacitive touch TFT display for faster data retrieval. With a massive 4 GB of storage you can store thousands of quarterly downloads, ensuring your data is always at your fingertips and archived in compliance.

### Seamless connectivity

Accessing mass memory and driver card data is a breeze through the DTCO's front interface. The integrated smart card reader enables direct card downloads, while the Bluetooth BLE interface connects to the VDO Fleet App (coming soon) on mobile devices and PCs, making data retrieval more convenient than ever. In addition, the familiar data transfer via USB remains an available option.

### Automated data handling\*

Use the optional automatic data upload to VDO Fleet via the VDO Fleet App (coming soon) or PC to ensure your information is stored securely. The Micro SD card reader provides data backup for added security.

### User-friendly design

The VDO DLK Smart Download Key is DTCO 4.1 ready, compatible with digital and smart tachographs (V1 and V2) and their associated cards. Its 180° rotatable display, visible download and status LEDs, and "KEYTOOLS" web interface via USB keep you in control of your data.

### Convenience meets security

Effortlessly pair via Bluetooth with a QR code and NFC on the key label. Connect the device to a PC using USB, regardless of whether it's powered on or off. Enhance security with password entry through the display and view local time for added convenience.



DLK Smart Download Key

Order number	Description
2910003149100	DLK Smart Download Key
2910003488000	DLK Smart Starter Kit VDO**

\* A license from VDO Fleet Tachograph Management is required for automatic data handling and archiving.

\*\*DLK Smart including 6 months VDO Fleet Tachograph Management Professional.

 <https://www.fleet.vdo.com/smart-download-key/>

# DLKPro S – Product Family

Read and store mass memory data from the digital tachograph and driver card easily and conveniently: the DLKPro Download Key S makes it simple. There is enough memory for approximately 6,000 quarterly downloads, making it ideal for small fleets and owner-operators.

With the full color touch display, integrated SD card reader and 29 adjustable languages, DLKPro S offers the following device functions. For example, you can:

- Download vehicle data from the front interface of the digital tachograph
- Read driver cards directly using the integrated chip card reader
- Archive driver and vehicle data in conformance with the law
- Easily and quickly transmit data to a computer via the USB port
- See on the display last downloads, download status, battery charge status, available memory capacity and even a reminder function to safely meet legal download deadlines

## DLKPro Download Key S

The DLKPro Download Key S is the ideal storage medium for small fleets, workshops and agencies to read mass memory data from digital tachographs and driver card data. The DLKPro Download Key S offers the normal functions, as well as:

- An integrated battery for downloading data from driver cards even without plugging in and for activating the integrated display. All other functions are available without a charged battery
- A reminder function for outstanding downloads to ensure compliance with legal regulations
- Full support of the smart tachograph generation, e.g. DTCO® 4.1



DLKPro Download Key S

Order number	Description
2910002165200	DLKPro Download Key S
A2C5951525666*	DLKPro License Card for violation module
2910002128800**	DLKPro License Card for DTCO® 4.0/4.1

\* With the optionally available license card, you can release the violation module for DLKPro Download Key S and DLKPro Compact to review vehicle and driver card data for violations.

\*\* This DLK Pro license card provides you with the DLKPro Compact function.  
Note: a current software update must be also installed on the key.

Free update for compatibility with DTCO 4.1:  <https://my.vdo.com>

## DLKPro Compact S

DLKPro Compact S is specifically suitable for self-driving entrepreneurs or smaller vehicle fleets with up to five vehicles and ten drivers. As a combined downloading, archiving and data management solution, DLK Pro Compact S can be used to quickly and securely read out data from digital tachographs and driver cards, transmit data to a PC and then visualize, archive and print out data with the help of the integrated PC application.



DLKPro Compact S

### With the DLKPro Compact S, you can:

- Read driver cards directly using the integrated chip card reader
- Export data for other PC applications
- View the activity of individual drivers (work, driving and rest periods) and a speed profile for the last 24 hours of driving time
- Print out recorded vehicle and driver data

### The DLKPro Compact S also offers:

- Automatic signature review of downloaded files and notifications of defective files
- A reminder function for upcoming downloads to ensure compliance with legal regulations
- An integrated battery for downloading data from driver cards even without plugging in and for evaluating data using the integrated display. All other functions are also available without a charged battery



DLKPro License Card for violation module

 <https://www.fleet.vdo.com/products/#Download+Tools>

For self-driving entrepreneurs or smaller fleets of up to five vehicles and ten drivers, the DLKPro Compact S can also be used as a basic data management solution.

Order number	Description
2910002165300	DLKPro Compact S
A2C5951525666*	DLKPro License Card for violation module
2910002128800**	DLKPro License Card for DTCO® 4.0/4.1

\* With the optionally available license card, you can release the violation module for DLKPro Download Key S and DLKPro Compact S to review vehicle and driver card data for violations.

\*\* This DLK Pro license card provides you with the DLKPro Compact function.

Note: a current software update must be also installed on the key.

## Accessories

Order number	Description
A2C5951467566	DLKPro Power Box (contents: vehicle charging device, country-specific connections, USB extension)
2910000477700	Extension Cables, 6 pin, 0.5 m
2910000477800	Extension Cables, 6 pin, 2 m



DLKPro Power Box



## VDO CardReader

The VDO CardReader connects to a computer via a USB cable. In combination with the VDO Fleet software, digital driver card data can be read out and saved for archiving and visualization.

Order number	Description
A2C5951675466	VDO CardReader
2910000260200	RFID Card Reader

 <https://www.fleet.vdo.com/products/vdo-card-reader/>



VDO CardReader

## VDO SmartTerminal

The VDO SmartTerminal is a stand-alone solution. This allows drivers to download their digital data from the mass memory (DTCO®) and driver card data day and night. A PC does not have to be ready for operation in the background.

- Easy solution for downloading driver card data and Download Key (vehicle unit data) at any time
- Compatible with the Smart DTCO® (2nd Generation V1 and V2) driver cards
- Connection via LAN, WLAN or USB to PC, stand-alone operation without a PC is possible (data transferred via USB stick)
- Possible to import data easily into VDO Fleet
- Meets legal requirements for fleets (downloading, archiving and visualization of mass memory and driver card data)
- Big 7" TFT touch screen display
- Basic analysis of the data downloads (driver and vehicle information)
- Wall or table mounted
- Software update locally or via Internet
- 32 GB of internal memory
- New powerful platform to enhance functionality
- RFID reader function: an RFID tag attached to a driver's license can be read and imported into VDO Fleet DMM to simplify the checking of driver's licenses

Order number	Description
2910002168600	VDO SmartTerminal

 <https://www.fleet.vdo.com/vdosmartterminal>



VDO SmartTerminal  
(table mounted)



VDO SmartTerminal  
(wall mounted)

## Diagram Chart Scanner

We offer a feed-in scanner with the right firmware to help you evaluate diagram charts. Please contact your dealer.



Diagram Chart Scanner



# Automatic, on Time, Anywhere – VDO Fleet Remote Download



VDO Remote DL 4G

The days of painstaking manual data read outs directly in the vehicle are a thing of the past. With VDO Fleet Remote Download, downloading vehicle and driver card data from the tachograph takes place automatically, on time and at any location in all European countries without your drivers having to intervene.



## VDO Remote DL 4G

Remote DL 4G hardware from VDO transmits driver and vehicle data to your system at LTE speed using an integrated SIM card. In conjunction with the VDO Fleet Remote Download Service, you define your individual download times. This means that time-consuming manual administration, implementation and checking of downloads are eliminated. Neither you nor your drivers have to manually back up or transfer data after returning home. This allows you to act in accordance with legal requirements, keep your data up to date and, above all, save a great deal of time.

By the way: you always achieve better results if you feed the system with up-to-date data from your fleet's tachographs. The shorter the interval between data downloads, the more precise the information that VDO Fleet provides you with. Like in terms of the infringement situation or fine catalog, for example.

 <https://www.fleet.vdo.com/products/remote-download/>

### Your advantages at a glance

- Storage and archiving of data without time expenditure
- No personnel required
- Location and time independent – throughout Europe
- Fast transmission with LTE technology
- Data can be used to optimize fleet management – works without company card in the vehicle
- Compliance with legal requirements avoids fines

Order number	Description	What's supplied
2910003586700	DL 4G Live Fast Package V2	Remote DL 4G hardware, Y-cable for fast installation, LTE antenna, GPS antenna, user guide
2910003586800	DL 4G Migration Package DLD-II V2	Remote DL 4G hardware, DLD-WR II adapter cable, LTE antenna, GPS antenna, user guide
2910003586600	DL 4G Live Package V2	Remote DL 4G hardware, installation cable for self-assembly, LTE antenna, GPS antenna, user guide



# VDO Fleet – The Web-Based Cloud Solution

If you value professional data assessment, but don't want to deal with IT infrastructure or data backups, VDO Fleet is exactly the right solution for you. All you need to archive, visualize, manage and complete comprehensive assessments of data archived with VDO Fleet is a computer with Internet access.

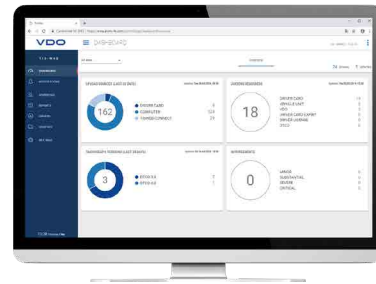
- **Ready to go** – right after registration, you can start using VDO Fleet immediately
- **No IT knowledge required** – you don't need on-site IT staff for setup and maintenance
- **Accessible at any time and from anywhere** – fleet information is immediately available to you around the clock and on any computer. All you need to use VDO Fleet is Internet access and your login data
- **Flexible customization** – you can add or remove users as needed at any time. You can also choose from 29 languages and customize them to suit your users
- **Web hosting** – we provide the space for you ourselves in the EU. So, you benefit from comprehensive and guaranteed service from a single source
- **Data security guaranteed** – thanks to SSL, TLS, HTTP(S) and database encryption, automated backups and ISO 27001 certification, you can be sure that your data meets all current security standards
- **Data protection ensured** – DSGVO-compliant data storage in the cloud relieves you of the obligation to comply with data protection regulations. For example, we automatically delete personal data for you after the retention period has expired
- **Always up to date** – you always work with the latest version. New functions are provided automatically. You do not have to buy or install updates



## VDO Fleet Tachograph Management

VDO Fleet Tachograph Management offers a range of important services that help you with your daily tasks and routine jobs in a legally compliant, time-saving and profitable way. This allows you to adhere with European and national regulations, avoid infringements, schedule orders, coordinate vehicles and drivers, receive detailed vehicle and driver reports and make the right business decisions.

- Archives data in accordance with current legislation
- Increases efficiency in driver instruction and fleet management
- Keeps driver working times in view
- Gives an overview of impending fines
- Centrally coordinates important dates
- Makes optimal vehicle and driver planning easy
- Overview of all fleet violations (Scorecard) down to driver level to avoid jeopardizing the community license (ERRU score) and derive targeted driver training

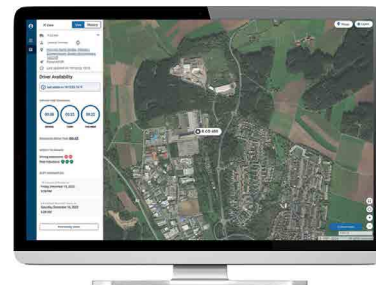


VDO Fleet Tachograph Management

## VDO Fleet Tachograph Live Services

The VDO Fleet Tachograph Live Services supports you in the disposition and control of your vehicles when they are on the road. The modules provided give you access to your fleet in nearly real time. This enables you to manage your tasks even more efficiently, identify delays at an early stage and accept further orders.

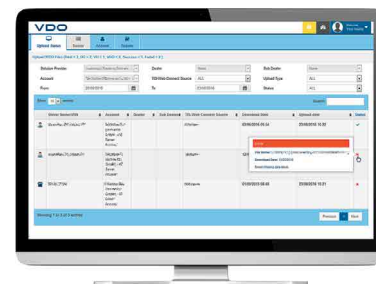
- Dispatch precisely with ideal coordination
- Gain more efficiency through optimized routes
- Reduce waiting times at ramps thanks to precise planning of unloading and loading processes
- Restrict vehicles and freight within defined zones and national borders, avoid nature reserves, truck prohibition zones, etc.
- With the VDO Fleet App, you can keep an eye on your fleet even when you're on the move



VDO Fleet Tachograph Live Services

## VDO Fleet Connect and Extract (interface to 3rd party services/provider)

If your telematics solution does not provide you with the option of archiving or evaluating tachograph data in compliance with the law, you can benefit from fully automatic data transfer to the powerful VDO Fleet Cloud with VDO Fleet Connect. This ensures your data is archived securely. With VDO Fleet Extract, processed data and reports can be transferred to other service providers (e.g. for payroll accounting).



VDO Fleet Connect and Extract







# VDO Hosting Service

The VDO service for automated remote transmission of tachograph data and archiving of this data in compliance with legal requirements.

- We/our dealers or specialist trade partners take care of the complete remote transmission of your tachograph data for you, so you can rest assured that your data is being downloaded and archived in accordance with legal regulations.
- Your company card is kept secure by Continental or one of our dealers or specialist trade partners and used via the VDO Fleet RTM service for authentication, enabling the tachograph data to be downloaded and archived in full automatically. You can then simply view your data via VDO Fleet Tachograph Management. All you need is a standard PC with Internet access. Speak to your local dealer or specialist trade partners to find out more.

Link to VDO Partner:

 <http://www.vdo-partner.com/vdo/index/deu?country=83&category=3&search=true>





# Solutions for Workshops

## VDO Label Printer

The VDO Label Printer prints the installation label for the tachograph on a label provided for this purpose directly and uncomplicated. The annoying and sometimes tedious removal of the old label and the sealing foil are no longer necessary.



Bestellnummer	Beschreibung
2910003144000	VDO Label Printer Incl. 15 Labels and ribbon (84 mm x 74 m)
2910003196100	Installation Label 10-pack
2910003144100	Ribbon for VDO Label Printer (84 mm x 74 m)
2910003196000	Calibration Kit 10-pack incl. installation labels instead of test report and sealing foil

## DTCO® Testing Set

We have combined all the necessary items for one test for tasks related to periodical DTCO® inspections:

- 1 x DTCO® backup battery plus label, for exchange in the DTCO® 1381
- 1 x cleaning card for cleaning the chip card slots
- 1 x cleaning cloth, to provide to drivers for cleaning driver cards
- 1 x roll of printer paper, for insertion or providing to drivers
- 2 x inspection certificate forms, for periodical inspections and installation plaque
- 1 x sealing film for sealing the installation plaque
- 2 x sealing caps



Order number	Description
2910002836800	DTCO® 4.0/4.1 testing set (see image)
2910002350300	Testing set (10x) § 57b StVZO
A2C5951432666	DTCO® 3.0 testing set
2910003168400	Testing set BP XL KITAS DTCO® 4.0/4.1 (10x) (with Bednorz XL seal)

Content

## Everything You Need for a DTCO® Test:

### Cleaning Card Set for DTCO®

Specially developed for DTCO® driver cards and DTCO® card slots. For cleaning during regular calibration to avoid disruptions and ensure driver cards do not become stuck.

Order number	Description
A2C5951183866	Cleaning cards set for DTCO® (6 cards and 6 cloths)



Cleaning card set for DTCO®

### Cleaning Cloths for Driver Cards

Specially developed for DTCO® driver cards. For regularly cleaning driver cards to avoid disruptions and ensure driver cards do not become stuck.

Order number	Description
A2C5951184966	Cleaning cloth set (12 cloths)



Cleaning cloth set

### Back-up Battery

Order number	Description
A2C5951195466	DTCO® battery LI-3.6 V 1.1 AH (six pack)



DTCO® battery

### Repair

Order number	Description
2910000246400	Flap interface for DTCO® 2.2
2910000955100	Flap interface for DTCO® 3.0–4.1
A2C5951205566	Cover for front panel DTCO® front interface, rubber (2 units) up to DTCO® 2.1
A2C5951185866	DTCO® printer drawer (part set) up to DTCO® 2.1
2910000955300	DTCO® printer drawer (DTCO® 3.0–4.1)
2910000955100	Card slot flap (DTCO® 3.0–4.1)



Flap interface for DTCO® 2.2



DTCO® front interface cover for front panel up to DTCO® 2.1



DTCO® printer drawer (part set) up to DTCO® 2.1

# Sealing

## Sealing Tools



Installation tool



Panel TCO 1310/1314



Plug cover 1318/19



Sealing cover 1318/19 for reinforced encoder cable



Cover 1318



Small sealing panel diagnostic connection 1319



Sealing cover MTCO 1324



Small sealing panel diagnostic connection MTCO 1324



Hood DTCO® 1381



Screw for small sealing panel for diagnostic connection MTCO 1324



Oval-head screw DTCO® 1381

## Sealing Caps

Order number	Description
1309-90110701	Panel TCO 1310/1314
1318-90025200	Plug cover 1318/19
1318-90025300	Sealing cover 1318/19 for reinforced encoder cable
1318-90021301	Cover 1318
1319-84-510-02	Small sealing panel diagnostic connection 1319
1324-90020200	Sealing cover MTCO 1324
1322-84-602-03	Small sealing panel diagnostic connection MTCO 1324
1381-90020100	Hood DTCO® 1381
KN07-0139-047	Screw for small sealing panel for diagnostic connection MTCO 1324
HS07-0100-116	Oval-head screw DTCO® 1381



## Sealing Material

Order number	Description
2910002614300	Seal wire, 1 coil (100 m)
2910002817900	Seal KITAS 4.0
2910002817900	Seal KITAS 4.0 RP
2910003019200	Seal KITAS 4.0 XL 4BP
1999-92000015	Aluminum seal 2 hole (each 100 units)
1311-0111-132-010	Cap, neutral, red
1318-0101-020-001	Seal 18x 2 mm 1318
1324-90100101	Sealing set MTCO 1324
1310-0111-039-000	Adhesive plaque (imp/km), red
1310-0111-037-001	Sealing plaque (transparent foil for K value sticker)
A2C5951465966	KITAS test certificate
A2C5951706666	Sealing film for KITAS test certificate
2910003019200	DTCO® seal XL4BP
<b>KITAS 4.0 Testing device UV set</b>	
2910002146700	Testing device UV set <b>Contains:</b> 1 x VDO carrying case 1 x USB charger 1 x Battery pack (accumulator) 1 x KITAS plastic test sample 1 x Test card with UV seal



1 coil seal wire



Aluminum seal (2 hole)



Sealing foil



Testing device UV set



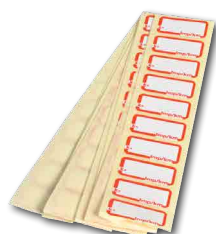
Cap, neutral, red



Seal 18x 2 mm 1318



Sealing set MTCO 1324



Adhesive plaque



Sealing plaque



Inspection certificate

# The WorkshopTab



WorkshopTab 2

In WorkshopTab, all the necessary functions for tachograph checking have been combined into one device for the first time. WorkshopTab 2 is the latest version of the digital assistant and offers even more noticeable advantages compared to its predecessor.

WorkshopTab 2 is the perfect “all in one” solution for the § 57b inspection directly at the truck. Intelligent tachographs can be checked and calibrated directly on the vehicle. WorkshopTab 2 prepares the relevant documents in the background, which can be sent to the printer at the touch of a button. The device reduces errors as well as the amount of work involved. With WorkshopTab 2, workshops are ideally prepared for the challenges to come in the future.

## The key benefits

- **More compact** – the card slot is replaceable and integrated deeper so that the inserted workshop card protrudes less
- **More robust** – hard rubber bumpers all-round
- **Larger** – screen diagonal increased by 20 % to 29.5 centimeters
- **Brighter** – luminance more than doubled
- **Clearer** – displayed content remains visible even in direct sunlight and appears natural and true to color
- **Faster** – boots up quicker and runs smoother thanks to new Intel Pentium processor
- **More secure** – with Open Service Navigation Message Authentication (OSNMA) for DTCO® 4.1
- **More compatible** – offline Bluetooth® interface for third-party providers
- **More flexible** – expanded path pulse count to 2,400 to 25,000
- **More modern** – new gyro sensor for the smallest levels of acceleration, rotation and position changes
- **More sustainable** – upgrade cable for future mandatory tachograph updates

## Receive WorkshopTab 2 by exchange or purchase a new one

If you already own a WorkshopTab, there are two different exchange offers available. If you do not yet own a WorkshopTab, you will receive attractive conditions for the purchase of the device as well as the software and licenses.

 <https://www.fleet.vdo.com/products/vdo-workshoptab-2/>

# Even Safer – KITAS 4.0 Documentation

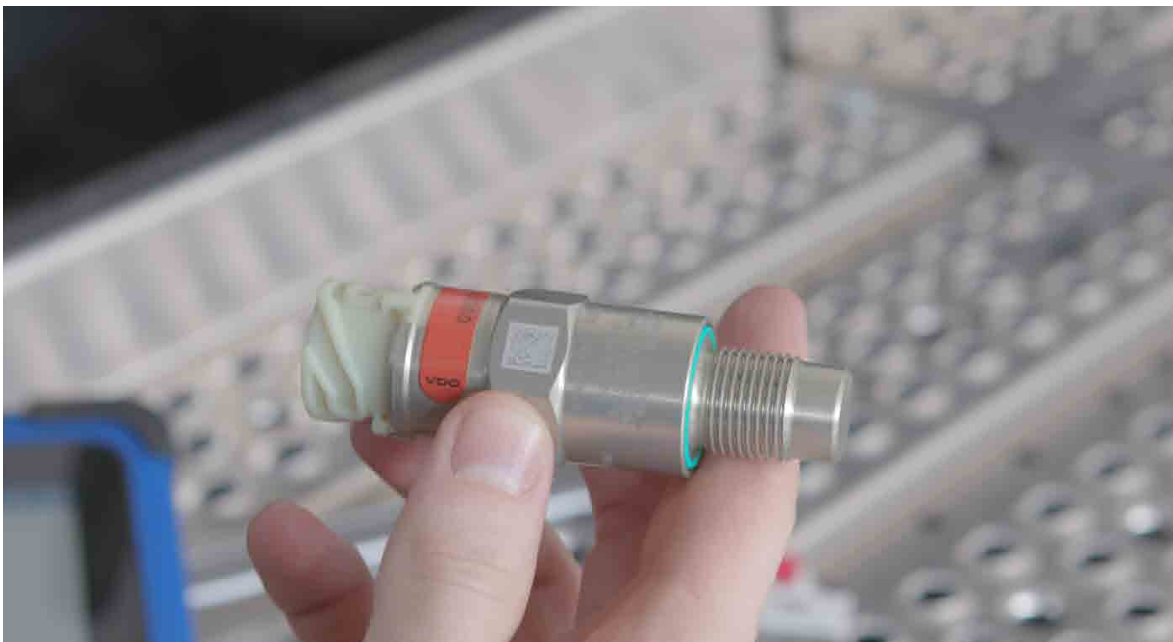
Furthermore, the KITAS 4.0 defined for the respective DTCO® must be inspected as well as registered together with the respective lead seal if it is the first time that they are installed, thereby ensuring the traceability of the lead seal. The WorkshopTab 4.0 also simplifies this process considerably. The integrated WorkshopTab camera allows you to register the KITAS and new lead seal easily by means of scanning the 2D codes. VDO also offers a practical Cloud solution for the respective documentation of the KITAS 4.0 and the new lead seal.

## GNSS Testing on DTCO®

As of Release 4.0, the DTCO® intelligent tachograph uses GNSS global satellite architecture. To ensure that the vehicle position can always be specified accurately, a corresponding GNSS test is mandatory. This can be performed directly with WorkshopTab 2 without an additional device.

## DSRC Testing

WorkshopTab 2 also ensures a smooth DSRC check in conjunction with the DSRC Meter from VDO. The DSRC Meter simulates a check by the authorities and sends the result to the WorkshopTab, which can be mounted either permanently in the workshop or on a tripod.





# Prepare Your Workshop for the Smart Tachograph

## Your benefits at a glance

- High demand due to retrofitting in accordance with EU mobility package I
- Customers expect 360-degree service incl. tachograph checks
- Permanent demand: tachographs must be checked every 2 years
- Support and information directly from the manufacturer VDO
- Registration in the European VDO Partner Finder
- You can register here:  
<https://www.workshop.vdo.com/mobility-package-partner>



## Our services for authorised workshops – the "VDO Workshop Services" all-round package

- Training management
- 48-hour replacement service for the WorkshopTab
- Hotline and online support
- Software updates, software upgrades (all licences for testing the smart tachograph) and Maintenance offers
- Calibration WorkshopTab
- Large online documentation and knowledge database (VDO Extranet)
- Data service for registration of new seal and KITAS serial numbers
- Revision and administration

## Your advantages at a glance

- Shorter inspection times
- Up to 50 % time savings in everyday workshop work
- Robust touch screen display for quick and easy data entry
- Reduced equipment (devices and cables)
- Self-explanatory test sequences
- Register here to become a Certified Installation Partner:  
<https://www.workshop.vdo.com/mobility-package-partner/>

YouTube <https://www.youtube.com/watch?v=ldnBz9wcc3g>

## WorkshopTab

Order number	Description	Contents
2910002727600	WorkshopTab 2 Basic	Tablet PC, power supply, battery, WorkshopLink, MTCO adapter in case
2910002727800	WorkshopTab 2 Basic LTE	Tablet PC for GSM, power supply, battery, WorkshopLink, MTCO adapter in case
2910002854300	WorkshopTab 2 Replacement	
2910002854400	WorkshopTab 2 Replacement LTE	
2910002855200	WorkshopTab 2 One Time payment	
2910002855300	WorkshopTab 2 36 month hardware service	
2910002728000	WorkshopTab 2 repair device	
2910002855100	WorkshopTab 2 repair device LTE	
2910002727900	WorkshopTab 2 warranty device	
2910002855000	WorkshopTab 2 warranty device LTE	

## Spare Parts for the WorkshopTab

Order number	Description	Contents
2910002854600	Power supply for tablet PC	90–230 V AC
A2C5950633666	Charging cable for vehicle voltage	10–30 V DC
2910002727400	WorkshopTablet Docking Station	
A2C5950633866	WorkshopLink DTCO®	
A2C5950633966	WorkshopLink Adapter MTCO	
A2C5950634066	WorkshopLink Adapter SE2400	
A2C5950749766	WorkshopLinkAdapter SE5000	
A2C5950634366	WorkshopTab equipment case	With hinges and device mount
2910002728100	WorkshopTab 2 equipment case	
2910002854800	WorkshopTab tablet replacement battery	
A2C5950749666	WorkshopTab battery charger	230 V AC, for 2 WorkshopTab batteries
2910000485400	WorkshopTab BlueMeter suction cup	
2910002150400	WorkshopTab BlueMeter crash protection	
2910002110700	WorkshopTab TyreMeterPro magnet holder	
2910002253600	BlueMeter/TyreMeterPro power adapter	
2910002253700	DSRC Meter power adapter	
2910000264800	WorkshopTab Stylus (Soft Cap)	For tablet PCs up to serial number ZW15xxxxxxx
2910000817300	WorkshopTab Stylus (Hard Cap)	For tablet PCs above serial number ZW16xxxxxxx
A2C5950634166	WorkshopTab Power Cord UK	
A2C5950634466	WorkshopTab Adapter Box 1318/1314	With connection for KTCO and clock test lead
A2C5951217566	CTC II test lead KTCO	Compatible with adapter box 1318/1314
A2C5951217666	CTC II test lead clock test	Compatible with adapter box 1318/1314
2910000849500	DTCO® update cable	
2910002278300	TyreMeterPro calibration kit	
2910002570100	10 x DTCO® upgrade coupon	
2910002660300	WorkshopTab LTE module	
2910002787100	WorkshopTab DTCO® upgrade kit	
2910002728200	WorkshopTab 2 Smartcard Reader	
2910003017400	WorkshopTab 2 Display protection film	
2910002854900	WorkshopTab 2 Hand loop	



WorkshopLink



TyreMeterPro



## Accessories for the WorkshopTab

Order number	Description	Contents
9999000228100	WorkshopTab 2 extended guarantee	Warranty extension to 36 months (order within the first 12 months)
A2C5951351466	WorkshopTab BlueMeter	Wireless light barrier
A2C5950783766	WorkshopTab Adapter Stoneridge	Adapter set WorkshopLink Adapter SE2400, WorkshopLink Adapter SE5000
2910002789000	WorkshopTab 2 Accessories Package	Docking station, BlueMeter, Adapter set WorkshopLink Adapter SE2400, WorkshopLink Adapter SE5000
A2C5950785866	WorkshopTab Set KTCO	KTCO adapter, test cable KTCO, test cable watch testing, flat ribbon cable
2910000441100	WorkshopLink Adapter	Adapter for activating rolling braking brakes without tachograph (KTCO license required)
A2C5950785466	WorkshopTab License Manipulation Check	
A2C5950785566	WorkshopTab License Reporting	
2910000849600	WorkshopTab License Universal/DTCO® 3.0	
2910000849700	WorkshopTab License DTCO® 4.0	
2910002038400	License TPH	License Technical Product Manual
2910002788900	WorkshopTab 2 Voucher Package	License package Manipulation Check, Reporting, Universal DTCO®
2910000284800	WorkshopTab License KTCO	
2910000531000	WorkshopTab License Extended Universal Programming	Extended Universal Programming SE5000
A2C5950749466	WorkshopTab KITAS direct	Adapter for the KITAS test
2910000985700	TyreMeter Pro	Module for automatic wheel circumference measurement
2910000985800	DSRC Meter	Module for the DSRC check
2910002034200	DSRC Meter tripod	
2910002139300	1 x SealBase License	
2910002304900	Smart Extended License	
2910002349400	Feature package 4.3 License	
2910002364000	BlueCAN kit	
2910002472600	Feature package 4.4 License	
2910002538600	10x calibration coupons	
2910002531000	DSRC Meter replacement battery	
2910002564100	Feature package 4.5 License	
2910002735900	Feature package 4.6 License	
2910002825900	Feature package 4.7 License	
2910003031700	Feature package 4.8 License	
2910003180100	Feature package 4.9 License incl. test license 4.1	
2910003247100	Lizen-Paket 4.10	
A2C5951499066	Set "Automatic measuring section" with light barrier	
A2C5951271466	CTC II Set, stationary (ATC)	
A2C5951338766	Light barrier for ATC/CTC II, stationary, complete	
X79-160-116-027	Universal pulse generator (sprocket BPS, 2 pieces)	
1601-30-015-00	Encoder adapter for brake tester	
1601-22-000-01	Double roller set	

Order number	Description	Contents
A2C5951511366	VDO TyreMeter (Set)	
A2C5951510966	Tyre Pad (1 bag = 135 pieces)	
A2C5951511066	Tyre marker, white, 100 ml	
A2C5951511166	VDO TyreMeter folding ruler, printed	
A2C3110250066	Reflective stand with bubble level	
1601-2100-050-001	Reflective tape for wheel circumference measurement, stationary	

Accessories for the WorkshopTab with DTCO® 4.1

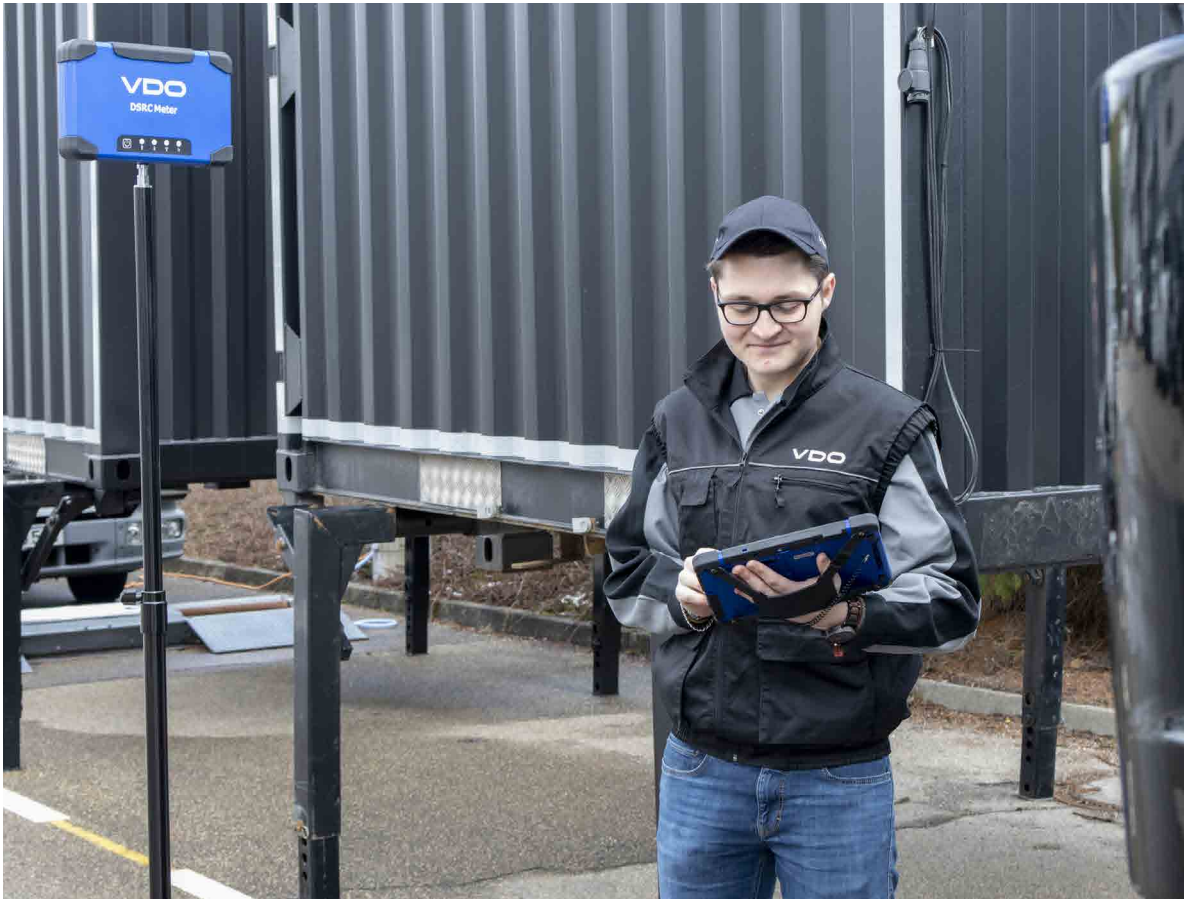
Order number	Description	Contents
2910002038400	WorkshopTab License DTCO® 4.0	
2910002253700	DSRC Meter power supply	
	DSRC Meter tripod	2.6 m extension
2910000985900	GNSS Repeater	
A2C5951707566	GNSS Antenna (optional)	
2910002148000	GNSS Repeater coaxial cable	60 m
2910002139300	PIN SealBase 4.0	
2910002066500	VDO clamping aid for lead seal 4.0	
2910002070900	Calibration kit DTCO® 4.1 and seal 4.0	
2910002063100	Demo case DTCO® 4.1 mobil	
2910002304900	Smart Extended License (for competitors Smart Tachographs)	



BlueMeter



DSRC Meter



# Training Accessories

## Training Sessions

VDO has developed a variety of training software to support efficient preparations for working with digital tachographs. These are adapted to the specific needs of various target audiences (workshops, drivers, vehicle fleet management). In addition, VDO has also developed training sessions that can be held on site with individual partners. These training sessions give you the support you need to work with digital tachographs, individual additional products and data processing software. Training sessions also offer answers to all questions on relevant EU regulations and their importance for individual parties involved. Contact us directly about our training services.

Here you can book trainings:

 [https://www.vdo-academy.de/vdo\\_academy/frontend/web/](https://www.vdo-academy.de/vdo_academy/frontend/web/)



DTDO® 4.1 demo case for trainings

## Demo Cases and Cards

Order number	Description
2910002063100	DTDO® 4.1 demo case for trainings
A2C5951126866	Driver card GEN2
A2C5951126666	Company card GEN2
A2C5951126766	Control card GEN2
A2C5951126966	Workshop card GEN2



Demo case for digital tachographs

## Operating Manual

Order number	Description
AAA2242720029	DTDO® operating manual Rel. 4.1
A2C1387320029	DTDO® operating manual Rel. 3.0
BA00-1381-22100101	DTDO® operating manual Rel. 2.2



DTDO® operating manual

## Technical Product Handbook/Documentation

Order number	Description
2910000916600	DTDO® 3.0 technical description with USB stick



DTDO® technical product handbook

## Training Software

Order number	Description
<b>Online Version</b>	
2910000797300	1 x License PIN DTDO® simulator Rel. 1.4–4.1
2910000797400	5 x License PIN DTDO® simulator Rel. 1.4–4.1
2910000797500	10 x License PIN DTDO® simulator Rel. 1.4–4.1



DTDO® simulator

Content

**Continental Automotive Technologies GmbH**

Sodener Straße 9

65824 Schwalbach

Germany

[tachograph@vdo.de](mailto:tachograph@vdo.de)

[www.fleet.vdo.com](http://www.fleet.vdo.com)

VDO – A Trademark of the Continental Corporation

The information in this brochure contains only general descriptions and performance features, which do not always apply in the described form in specific applications and could change due to further development of the product. This information concerns only a technical description of the product. It is not meant or intended to be a special guarantee for a particular quality or particular durability. An obligation to provide the respective characteristics shall only exist if expressly agreed in the terms of contract. We reserve the right to make changes in availability as well as technical changes without prior notice.

Continental Automotive Technologies GmbH | English | © 09-2024

